

Quinone Reductase Induction as a Biomarker for Cancer Chemoprevention¹

Muriel Cuendet, Carol P. Oteham, Richard C. Moon, and John M. Pezzuto*

Department of Medicinal Chemistry and Molecular Pharmacology, School of Pharmacy and Pharmaceutical Sciences, College of Pharmacy, Nursing, and Health Sciences, Purdue University, West Lafayette, Indiana 47907

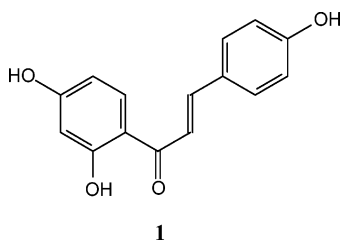
Received September 23, 2005

Chemoprevention involves the use of natural or synthetic substances to reduce the risk of developing cancer. Strategies for protecting cells from initiation events include decreasing metabolic enzymes responsible for generating reactive species (phase I enzymes) while increasing phase II enzymes that can deactivate radicals and electrophiles known to intercede in normal cellular processes. Reduction of electrophilic quinones by quinone reductase is an important detoxification pathway. Following evaluation of approximately 3000 plant and marine organism extracts, the number characterized as “active” was established in the range of 12% of the total, and over 60 active compounds have been isolated as quinone reductase inducers. One of them, isoliquiritigenin (**1**), isolated from tonka bean, was shown to be a monofunctional inducer by having similar quinone reductase inducing ability in wild-type Hepa 1c1c7 cells and two mutant cell lines. To further investigate the mechanism of induction, HepG2 human hepatoma cells stably transfected with ARE-luciferase plasmid were used. Isoliquiritigenin (**1**) significantly induced the luciferase activity in a dose-dependent manner. On the basis of these results, a full-term cancer chemoprevention study was conducted with 7,12-dimethylbenz[*a*]anthracene (DMBA)-treated female Sprague-Dawley rats. Dietary administration of **1** increased tumor latency. Based on these promising preliminary results, additional mechanistic studies are underway, as well as full-term carcinogenesis studies with chronic administration schedules.

Introduction

Cancer chemoprevention involves prevention, delay, or reversal of the process of carcinogenesis through ingestion of dietary or pharmaceutical agents.^{1,2} Recent advances that have defined the cellular and molecular events associated with carcinogenesis, along with a growing body of experimental, epidemiological, and clinical trial data, provide a foundation for relatively new strategies of cancer prevention.^{3,4} One such strategy involves suppression of carcinogen metabolic activation or blocking the formation of ultimate carcinogens.⁵ In particular, the induction of phase II enzymes can offer protection against toxic and reactive chemical species.⁶ Many recent studies have shown that elevation of phase II enzymes, such as NAD(P)H:quinone reductase (QR) and GST, correlates with protection against chemical-induced carcinogenesis in animal models,^{7,8} in the stage of promotion⁹ as well as initiation.⁷

In our program for the procurement of novel plant-derived chemotherapeutic/chemopreventive agents, induction of QR has been used as one marker of activity.¹⁰ This led to the identification of isoliquiritigenin (**1**) as an inducer of quinone reductase.¹¹ The



evaluation of **1** in a mouse mammary organ culture (MMOC) assay, which is used as a secondary discriminator, also exhibited a significant response.¹¹ Here, the effect of **1** was evaluated in cultured Hepa 1c1c7 murine hepatoma cells and two mutants thereof.¹² Furthermore, we have analyzed the mechanism of the observed enzyme induction in HepG2 cells stably transfected with ARE.

Finally, the chemopreventative potential was investigated in a full-term carcinogenesis study.

Quinone Reductase Induction and Cancer Chemoprevention

Carcinogenesis is a complex and protracted multistage process, yet the entire course can be initiated by a single event wherein a cellular macromolecule is damaged by an endogenous or exogenous agent. Strategies for protecting cells from these initiating events include decreasing metabolic enzymes responsible for generating reactive species (phase I enzymes) while increasing phase II enzymes that can deactivate radicals and electrophiles known to intercede in normal cellular processes. Reduction of electrophilic quinones by QR is an important detoxification pathway, which converts quinones to hydroquinones and reduces oxidative cycling.^{13,14} Enzyme inducers are of two types: monofunctional and bifunctional.¹⁵ Bifunctional inducers increase phase II enzymes as well as phase I enzymes, such as aryl hydrocarbon hydroxylase, and bind with high affinity to the aryl hydrocarbon (Ah) receptor-xenobiotic response element (XRE).^{16,17} Monofunctional inducers induce phase II enzymes selectively and will activate the antioxidant response element (ARE) through Keap1 and Nrf2.^{18,19} Since phase I enzymes can activate procarcinogens to their ultimate reactive species, monofunctional agents that induce phase II enzymes selectively would theoretically appear to be more desirable candidates for cancer chemoprevention.²⁰ In addition, selective phase II enzyme inducers would be anticipated to serve as anticarcinogens early in the process of carcinogenesis, but it has been established that inhibition of carcinogenesis at later stages is also possible.⁹

QR elevation with *in vitro* and *in vivo* systems has been shown to correlate with induction of other protective phase II enzymes and provides a reasonable biomarker for the potential chemoprotective effect of test agents against cancer initiation.²¹ The murine hepatoma cell line Hepa 1c1c7 contains easily measurable inducible QR that provides a reliable, high-throughput system for detecting inducers of phase II enzymes.²² This assay can also be used to determine if an agent is monofunctional or bifunctional. This is accomplished by comparing the induction capability of a compound in wild-type Hepa 1c1c7 cells with that observed in two mutant cell lines designated TAOc1BP^rc1 and BP^rc1, which are defective

¹ Dedicated to Dr. Norman R. Farnsworth of the University of Illinois at Chicago for his pioneering work on bioactive natural products.

* Address correspondence to this author. Tel: (765) 494-1368. Fax: (765) 494-7880. E-mail: jpezzuto@purdue.edu.

Table 1. Effect of Isoliquiritigenin (**1**) on QR Activity in Hepa 1c1c7 Hepatoma Cells and Hepa 1c1c7 Mutants

cell line	isoliquiritigenin (1)			4'-bromoflavone			sulforaphane		
	CD ^a (μ M)	IC ₅₀ ^b (μ M)	CI ^c	CD ^a (μ M)	IC ₅₀ ^b (μ M)	CI ^c	CD ^a (μ M)	IC ₅₀ ^b (μ M)	CI ^c
Hepa 1c1c7	1.80 \pm 0.44	19.6 \pm 2.5	11	0.023 \pm 0.010	>62.5	>2700	0.30 \pm 0.04	6.3 \pm 0.9	21
BP ^c 1	9.91 \pm 0.87	16.2 \pm 3.8	2	>250	>62.5	NA ^d	0.49 \pm 0.13	7.6 \pm 0.3	16
TAOc1BP ^c 1	2.22 \pm 0.36	22.0 \pm 3.0	10	>250	>62.5	NA ^d	0.33 \pm 0.07	5.9 \pm 0.0	18

^a Mean value of the concentration required to double the specific activity of QR \pm SD ($n = 2$). ^b Mean value of the half-maximal inhibitory concentration of cell viability \pm SD ($n = 2$). ^c Chemoprevention index: ratio between IC₅₀ and CD. ^d NA, not applicable.

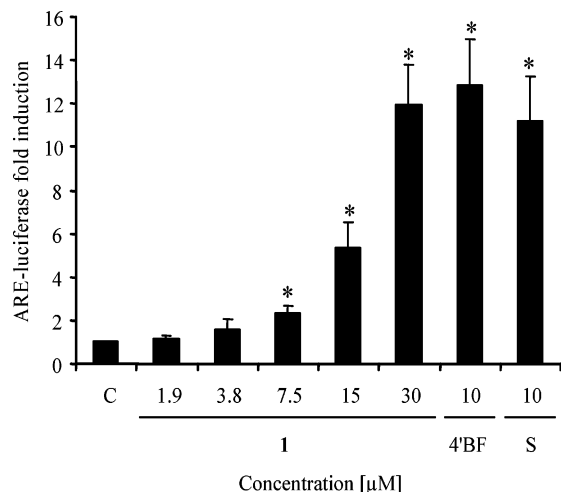


Figure 1. Isoliquiritigenin (**1**) induces the luciferase activity in HepG2 cells stably transfected with an ARE-luciferase plasmid. Transfected cells were treated with 1.9–30 μ M isoliquiritigenin (**1**), 10 μ M 4'-bromoflavone (4'BF), 10 μ M sulforaphane (S), or DMSO (0.5% final concentration) as control (C) and then analyzed for chemiluminescence using the luciferase assay system from Promega. Results are shown as a fold induction relative to the level observed in the control. Results are the means of three determinations \pm SD. *Significantly different from control values, determined by Student's *t*-test ($p < 0.05$).

in a functional Ah receptor or unable to translocate the receptor–ligand complex to the nucleus, respectively.²³ Compounds that have similar inducing ability in the wild-type and mutant Hepa lines are considered monofunctional inducers.

Screening of Plants and Marine Organisms

We have procured plant and marine organism materials from throughout the world for investigation of natural inhibitors of carcinogenesis. The overall experimental approach for obtaining natural product anticarcinogens from these plants and marine organisms has been described in detail.^{24–29} Crude nonpolar and polar extracts, prepared from each plant or marine organism obtained, are evaluated for their potential chemopreventive activity using a battery of short-term *in vitro* bioassays developed to monitor inhibition of tumorigenesis at the various stages.³⁰ On the basis of the results of these bioassays, selected extracts are further evaluated in a MMOC model. In this assay, test materials are evaluated for their ability to inhibit 7,12-dimethylbenz(*a*)anthracene (DMBA)-induced preneoplastic lesions.³¹ One of the assays used to study the initiation stage is the induction of QR activity.⁷ In the next stage, extracts showing potency in the *in vitro* bioassays are selected for bioassay-guided fractionation to uncover their active principles. Pure active compounds are then evaluated in the QR assay, and selected compounds are further processed for evaluation in the MMOC model. Finally, the *in vivo* cancer chemopreventive activity of highly promising pure plant or marine organism constituents is evaluated in animal full-term tumorigenesis models, including the two-stage mouse skin model using DMBA as an initiator and 12-*O*-tetradecanoylphorbol-13-acetate (TPA) as a promoter and the rat

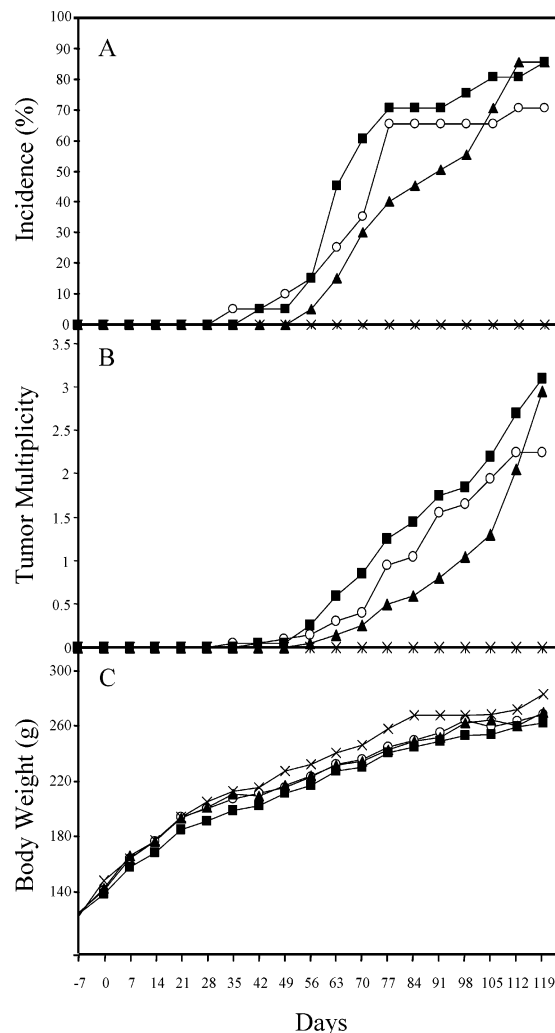


Figure 2. Effect of dietary isoliquiritigenin (**1**) on percent incidence of observable mammary tumors (A), number of tumors (B), and body weight (C). Female Sprague-Dawley rats were given a single i.g. dose of 7,12-dimethylbenz(*a*)anthracene (DMBA) on day 0. The rat treatment groups were (O) DMBA in sesame oil; (■) DMBA and 2500 mg/kg diet of isoliquiritigenin; (▲) DMBA and 5000 mg/kg diet of isoliquiritigenin; and (×) 5000 mg/kg diet of isoliquiritigenin. Isoliquiritigenin was included in the diet during the period of 7 days prior to DMBA administration (–7) to 7 days post-DMBA administration (+7). During the remainder of the experimental period, unsupplemented diet was given to the animals (20 rats/group).

mammary carcinogenesis model with *N*-methyl-*N*-nitrosourea (MNU) or DMBA as a carcinogen.^{32,33} Additional *in vivo* models are used as required.

To date, we have evaluated 2675 plant extracts and 528 marine organism extracts in the QR induction assay system by using cultured Hepa 1c1c7 cells. Of these, 191 plant extracts (7.1%) and 98 marine organism extracts (18.6%) showed QR induction activity. When concentration to double activity (CD) values of extracts are below 10 μ g/mL, they are considered as active leads. Many have

been discussed in various review articles.^{10,24} Numerous epidemiological studies, together with data from in vivo and in vitro experiments, have shown that vegetable, especially cruciferous vegetables, have an important role in protection against various cancers.^{34–36} Many cruciferous vegetables such as cabbage, broccoli, Brussels sprouts, watercress, and cauliflower induce phase II enzymes.³⁷ Active compounds isolated from these vegetables include glucosinolates, sulforaphane, indole-3-carbinol, and brassinin.^{38–41} In garlic and onion, the organosulfur compounds induce phase II detoxification enzymes and seem to be responsible for the chemoprotective action.⁴² Recently, curcumin, a yellow pigment of turmeric, was reported to induce phase II detoxification enzymes, while inhibiting procarcinogen activating phase I enzymes, such as cytochrome P4501A1.⁴³ In tomatillo, an ingredient used in Latin America for salsas, over 30 withanolides were isolated and showed potent QR induction.⁴⁴ Some medicinal plants such as *Tephrosia purpurea* and species of the genus *Renealmia* were also found to be active.^{45,46} In total, over 60 active compounds have been isolated as QR inducers, and substantial molecular diversity has been observed. These active compounds comprise ceramides, terpenoids, withanolides, flavonoids, chalcones, alkaloids, and diarylheptanoids. In addition to the active phytochemicals, semi-synthetic or synthetic derivatives of bioactive compounds can provide more promising lead compounds. For example, the flavonoid 4'-bromoflavone was found to be an extremely potent inducer of QR and an effective cancer chemopreventive agent.⁷

Cancer Chemopreventive Potential of Isoliquiritigenin (1)

In our search for novel cancer chemopreventive agents, **1**, a compound isolated from *Dipteryx odorata* (Aubl.) Willd. (tonka bean), but also present in licorice and shallots, was found to significantly induce QR activity in Hepa 1c1c7 cells (CD: 2 μ M) and exhibited a significant response in a carcinogen-treated MROC assay (76% inhibition at 10 μ g/mL).¹¹ In addition, **1** inhibited azoxymethane (AOM)-induced murine colon carcinogenesis and AOM-induced murine colon aberrant crypt focus formation.⁴⁷ This compound has also been found to suppress metastasis in a pulmonary metastasis model of mouse renal cell carcinoma and to prevent severe 5-fluorouracil-induced leukocytopenia in this model.⁴⁸

In this study, we tested the potential of **1** to induce QR activity in Hepa 1c1c7 cells and two mutant cell lines using the method described previously.¹⁰ Compound **1** induced QR activity in a dose-dependent manner in the concentration range of 2–30 μ M with a maximum of 7-fold induction at the highest concentration tested. As summarized in Table 1, CD values obtained with **1** were similar between the wild-type and the mutant cell lines, indicative of a monofunctional induction pattern. Compound **1** is thus lacking phase I enzyme-inducing properties and is devoid of cytochrome P450-activating properties. Induction profiles of two well-known inducers, sulforaphane, a monofunctional inducer, and 4'-bromoflavone (4'BF), a bifunctional inducer, are also shown.

To further investigate the mechanism of induction, HepG2 human hepatoma cells stably transfected with ARE-luciferase plasmid were used.²⁷ As shown in Figure 1, treatment with **1** (7.5–30 μ M) significantly induced luciferase expression via interaction with ARE in a dose-dependent manner and did not show any cytotoxicity. The positive controls 4'BF (10 μ M) and sulforaphane (10 μ M) also induced the luciferase expression.

Finally, **1** was evaluated in the DMBA-induced rat mammary tumorigenesis model as described previously.⁷ To determine the doses to use, a MTD was performed using 1000, 2000, 3000, 4000, 5000, and 20 000 mg/kg diet, and no toxicity was observed, based on body weight change and necropsy. As shown in Figure 2A, administration of **1** (5000 mg/kg diet) increased tumor latency in Sprague-Dawley rats, but had little effect on the incidence of mammary tumors after 120 days (Figure 2B). There were no significant differences in body weight (Figure 2C) between the

different groups. On the basis of these preliminary results, additional mechanistic studies are underway, as well as full-term carcinogenesis studies with chronic administration schedules.

Conclusions

Induction of the phase II detoxification enzymes such as QR is a useful strategy for cancer chemoprevention. Many edible plants have been found to contain cancer chemopreventive agents capable of inducing phase II enzymes. Notably, since some of the lead compounds are found in vegetables, administration of cancer chemopreventive agents through the diet may be viewed as a convenient and effective strategy in cancer prevention.

Acknowledgment. This work was supported by program project P01 CA48112 funded by the National Cancer Institute, NIH, Bethesda, MD.

References and Notes

- Sporn, M. B.; Newton, D. L. *Fed. Proc.* **1979**, *38*, 2528–2534.
- Hong, W. K.; Sporn, M. B. *Science* **1997**, *278*, 1073–1077.
- Kelloff, G. J.; Sigman, C. C.; Greenwald, P. *Eur. J. Cancer* **1999**, *35*, 1755–1762.
- Kensler, T. W. *Environ. Health Perspect.* **1997**, *105*, Suppl. 4, 965–970.
- Wattenberg, L. W. *Cancer Res.* **1985**, *45*, 1–8.
- Begleiter, A.; Leith, M. K.; Curphey, T. J.; Doherty, G. P. *Oncol. Res.* **1997**, *9*, 371–382.
- Song, L. L.; Kosmeder, J. W., II; Lee, S. K.; Gerhäuser, C.; Lantvit, D.; Moon, R. C.; Moriarty, R. M.; Pezzuto, J. M. *Cancer Res.* **1999**, *59*, 578–585.
- Boone, C. W.; Steele, V. E.; Kelloff, G. J. *Mutat. Res.* **1992**, *267*, 251–255.
- Gills, J. J.; Jeffery, E. H.; Matusheski, N. V.; Moon, R. C.; Lantvit, D. D.; Pezzuto, J. M. *Cancer Lett.*, **2005**, in press.
- Kang, Y. H.; Pezzuto, J. M. *Methods Enzymol.* **2004**, *382*, 380–414.
- Jang, D. S.; Park, E. J.; Hawthorne, M. E.; Vigo, J. S.; Graham, J. G.; Cabieses, F.; Santarsiero, B. D.; Mesecar, A. D.; Fong, H. H.; Mehta, R. G.; Pezzuto, J. M.; Kinghorn, A. D. *J. Nat. Prod.* **2003**, *66*, 583–587.
- De Long, M. J.; Santamaria, A. B.; Talalay, P. *Carcinogenesis* **1987**, *8*, 1549–1553.
- Ross, D.; Kepa, J. K.; Winski, S. L.; Beall, H. D.; Anwar, A.; Siegel, D. *Chem. Biol. Interact.* **2000**, *129*, 77–97.
- Talalay, P.; De Long, M. J.; Prochaska, H. J. *Proc. Natl. Acad. Sci. U.S.A.* **1988**, *85*, 8261–8265.
- Prochaska, H. J.; Talalay, P. *Cancer Res.* **1988**, *48*, 4776–4782.
- Sogawa, K.; Fujii-Kuriyama, Y. *J. Biochem. (Tokyo)* **1997**, *122*, 1075–1079.
- Yang, C. S.; Smith, T. J.; Hong, J. Y. *Cancer Res.* **1994**, *54*, 1982s–1986s.
- Dinkova-Kostova, A. T.; Holtzclaw, W. D.; Cole, R. N.; Itoh, K.; Wakabayashi, N.; Katoh, Y.; Yamamoto, M.; Talalay, P. *Proc. Natl. Acad. Sci. U.S.A.* **2002**, *99*, 11908–11913.
- Eggler, A. L.; Liu, G.; Pezzuto, J. M.; van Breemen, R. B.; Mesecar, A. D. *Proc. Natl. Acad. Sci. U.S.A.* **2005**, *102*, 10070–10075.
- Talalay, P. *Biofactors* **2000**, *12*, 5–11.
- Pezzuto, J. M. In *Recent Advances in Phytochemistry, Phytochemistry of Medicinal Plants*; Arnason, J., Mata, R., Romeo, J., Eds.; Plenum Press: New York, 1995; Vol. 29, pp 19–44.
- Prochaska, H. J.; Santamaria, A. B. *Anal. Biochem.* **1988**, *169*, 328–336.
- Gerhäuser, C.; Lee, S. K.; Kosmeder, J. W.; Moriarty, R. M.; Hamel, E.; Mehta, R. G.; Moon, R. C.; Pezzuto, J. M. *Cancer Res.* **1997**, *57*, 3429–3435.
- Kinghorn, A. D.; Su, B. N.; Jang, D. S.; Chang, L. C.; Lee, D.; Gu, J. Q.; Carcache-Blanco, E. J.; Pawlus, A. D.; Lee, S. K.; Park, E. J.; Cuendet, M.; Gills, J. J.; Bhat, K.; Park, H. S.; Mata-Greenwood, E.; Song, L. L.; Jang, M.; Pezzuto, J. M. *Planta Med.* **2004**, *70*, 691–705.
- Mehta, R. G.; Pezzuto, J. M. *Curr. Oncol. Rep.* **2002**, *4*, 478–486.
- Pezzuto, J. M. *Biochem. Pharmacol.* **1997**, *53*, 121–133.
- Pezzuto, J. M.; Kosmeder, J. W.; Park, E. J.; Lee, S. K.; Cuendet, M.; Gills, J. J.; Bhat, K.; Grubjesic, S.; Park, H. S.; Mata-Greenwood, E.; Tan, Y. M.; Yu, R.; Lantvit, D. D.; Kinghorn, A. D. In *Cancer Chemoprevention, Volume 2: Strategies for Cancer Chemoprevention*; Kelloff, G. J., Hawk, E. T., Sigman, C. C., Eds.; Humana Press Inc.: Totowa, NJ, 2005; Vol. 2, pp 3–37.
- Jensen, P.; Fenical, W. *Annu. Rev. Microbiol.* **1994**, *48*, 559–584.

- (29) Mincer, T. J.; Jensen, P.; Kauffman, C. A.; Fenical, W. *Appl. Environ. Microbiol.* **2002**, *68*, 5005–5011.
- (30) Pezzuto, J. M.; Angerhofer, C. K.; Mehdi, H. *Stud. Nat. Prod. Chem.* **1998**, *20*, 507–560.
- (31) Mehta, R. G.; Hawthorne, M. E.; Steele, V. E. *Methods Cell Sci.* **1997**, *19*, 19–24.
- (32) Jang, M.; Cai, L.; Udeani, G. O.; Slowing, K. V.; Thomas, C. F.; Beecher, C. W.; Fong, H. H.; Farnsworth, N. R.; Kinghorn, A. D.; Mehta, R. G.; Moon, R. C.; Pezzuto, J. M. *Science* **1997**, *275*, 218–220.
- (33) Udeani, G. O.; Gerhäuser, C.; Thomas, C. F.; Moon, R. C.; Kosmeder, J. W.; Kinghorn, A. D.; Moriarty, R. M.; Pezzuto, J. M. *Cancer Res.* **1997**, *57*, 3424–3428.
- (34) Go, V. L.; Wong, D. A.; Resnick, M. S.; Heber, D. *J. Nutr.* **2001**, *131*, 179S–180S.
- (35) Park, E. J.; Pezzuto, J. M. *Cancer Metastasis Rev.* **2002**, *21*, 231–255.
- (36) Van Duyn, M. A.; Pivonka, E. *J. Am. Diet. Assoc.* **2000**, *100*, 1511–1521.
- (37) Talalay, P.; Zhang, Y. *Biochem. Soc. Trans.* **1996**, *24*, 806–810.
- (38) Nho, C. W.; Jeffery, E. *Toxicol. Appl. Pharmacol.* **2001**, *174*, 146–152.
- (39) Zhang, Y.; Talalay, P.; Cho, C. G.; Posner, G. H. *Proc. Natl. Acad. Sci. U.S.A.* **1992**, *89*, 2399–2403.
- (40) Keck, A. S.; Staack, R.; Jeffery, E. H. *Nutr. Cancer* **2002**, *42*, 233–240.
- (41) Rushmore, T. H.; Kong, A. N. *Curr. Drug Metab.* **2002**, *3*, 481–490.
- (42) Singh, S. V.; Pan, S. S.; Srivastava, S. K.; Xia, H.; Hu, X.; Zaren, H. A.; Orchard, J. L. *Biochem. Biophys. Res. Commun.* **1998**, *244*, 917–920.
- (43) Khafif, A.; Schantz, S. P.; Chou, T. C.; Edelstein, D.; Sacks, P. G. *Carcinogenesis* **1998**, *19*, 419–424.
- (44) Misico, R. I.; Song, L. L.; Veleiro, A. S.; Cirigliano, A. M.; Tettamanzi, M. C.; Burton, G.; Bonetto, G. M.; Nicotra, V. E.; Silva, G. L.; Gil, R. R.; Oberti, J. C.; Kinghorn, A. D.; Pezzuto, J. M. *J. Nat. Prod.* **2002**, *65*, 677–680.
- (45) Chang, L. C.; Gerhauser, C.; Song, L.; Farnsworth, N. R.; Pezzuto, J. M.; Kinghorn, A. D. *J. Nat. Prod.* **1997**, *60*, 869–873.
- (46) Gu, J. Q.; Park, E. J.; Vigo, J. S.; Graham, J. G.; Fong, H. H.; Pezzuto, J. M.; Kinghorn, A. D. *J. Nat. Prod.* **2002**, *65*, 1616–1620.
- (47) Baba, M.; Asano, R.; Takigami, I.; Takahashi, T.; Ohmura, M.; Okada, Y.; Sugimoto, H.; Arika, T.; Nishino, H.; Okuyama, T. *Biol. Pharm. Bull.* **2002**, *25*, 247–250.
- (48) Yamazaki, S.; Morita, T.; Endo, H.; Hamamoto, T.; Baba, M.; Joichi, Y.; Kaneko, S.; Okada, Y.; Okuyama, T.; Nishino, H.; Tokue, A. *Cancer Lett.* **2002**, *183*, 23–30.

NP050362Q